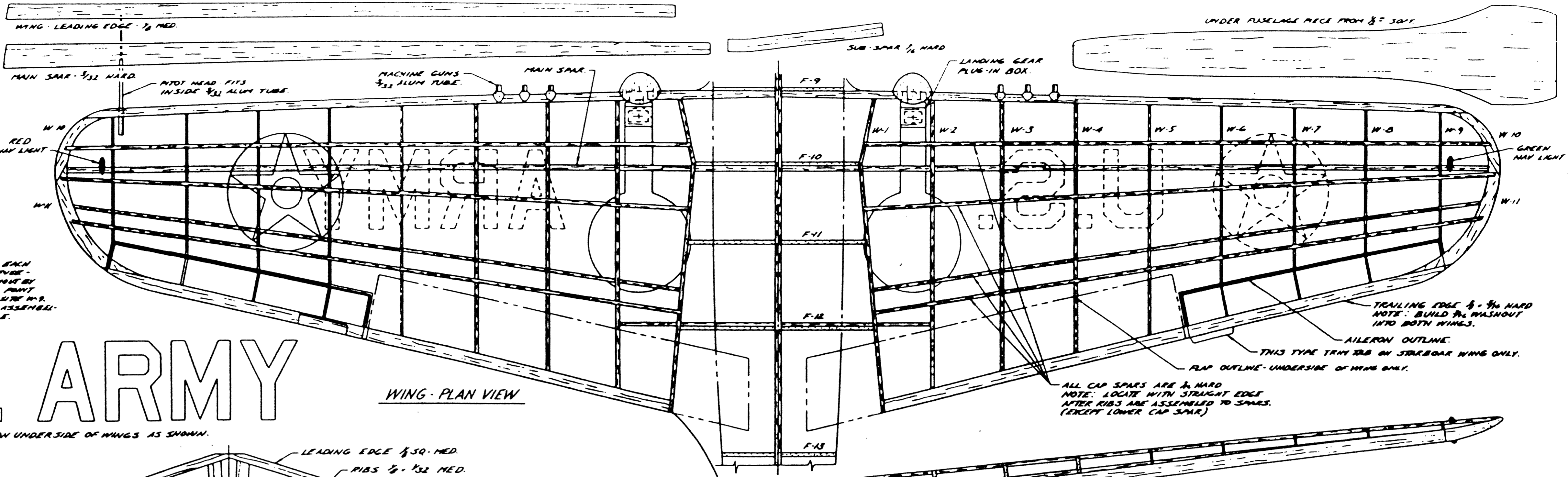


REAR FILLET FRAME  
MAKE 2, LOWER IS 1/4 PLYWOOD  
UPPER IS 1/4 SOFT.

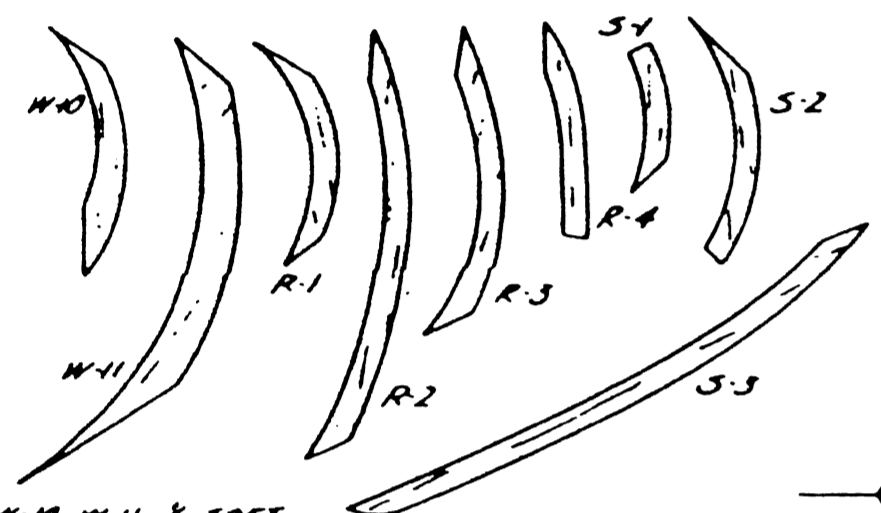
NOTES ON WING CONSTRUCTION: BUILD EACH WING SEPARATELY. W-1 IS ATTACHED TO FUSELAGE SUB-ASSEMBLY. BUILD IN 1/4 W/SPRUE BY INSERTING 1/4 1x4 PLYWOOD TO POINT UNDER TRAILING EDGE. PARTIAL SPRING IN. DO NOT NOTCH RIBS FOR CAP SPARS UNTIL ASSEMBLED AND LOCATED WITH A STRAIGHT EDGE.

# U.S. ARMY

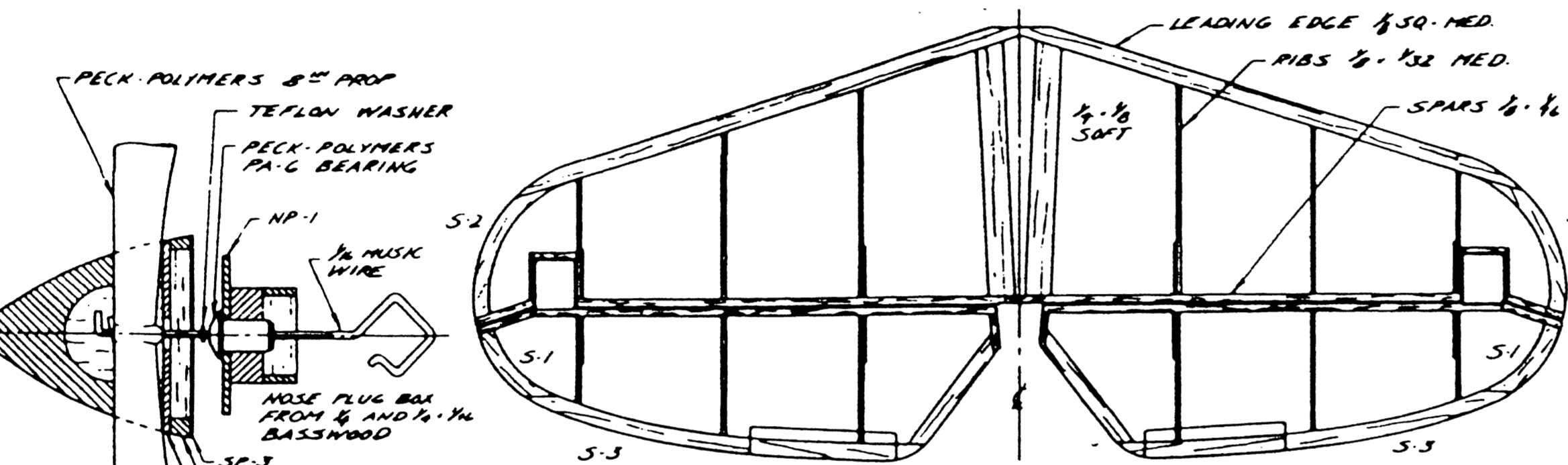
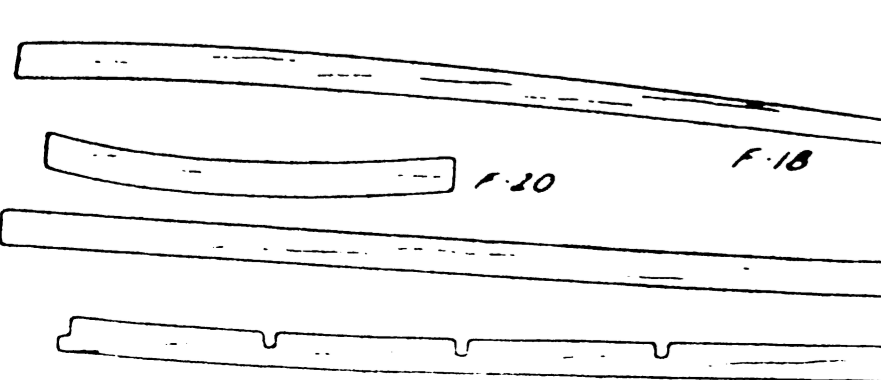
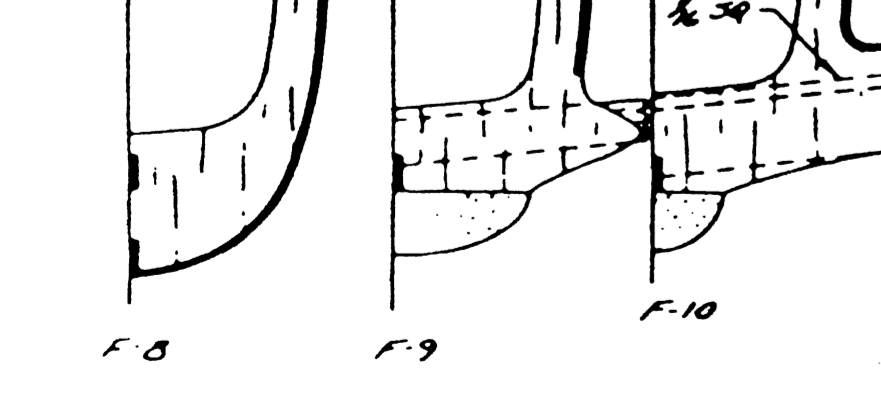
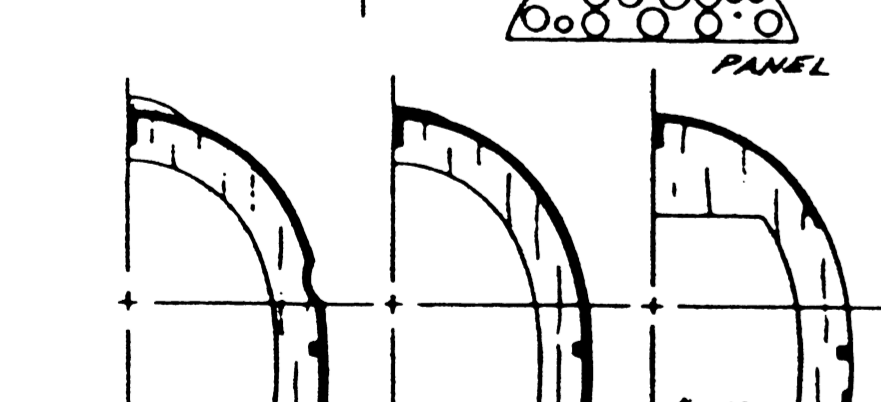
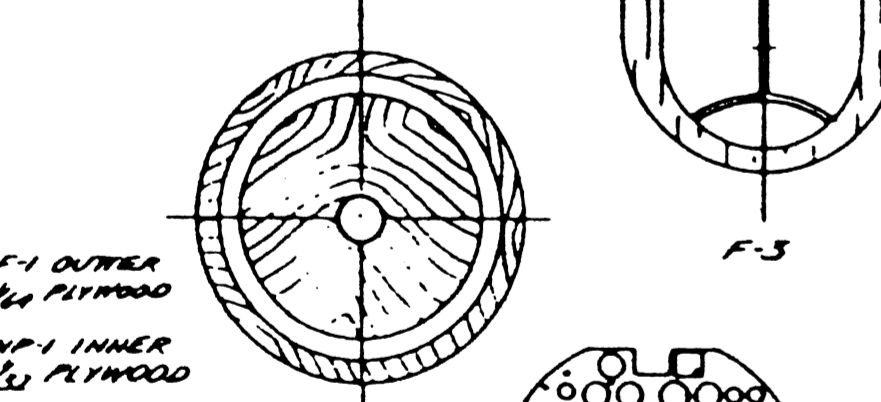
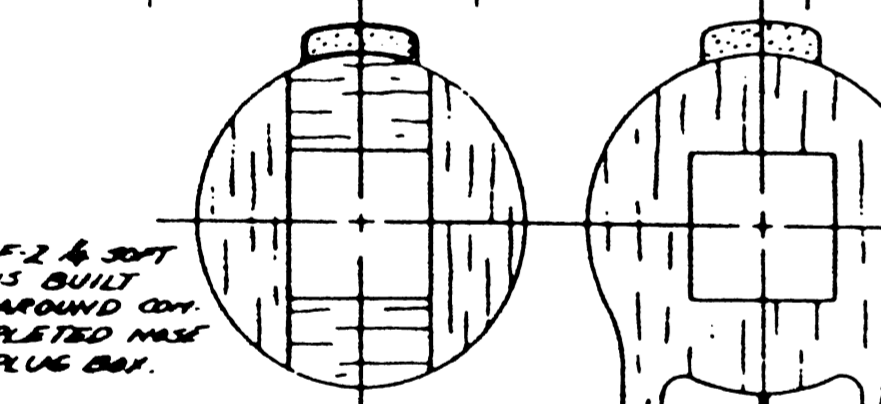
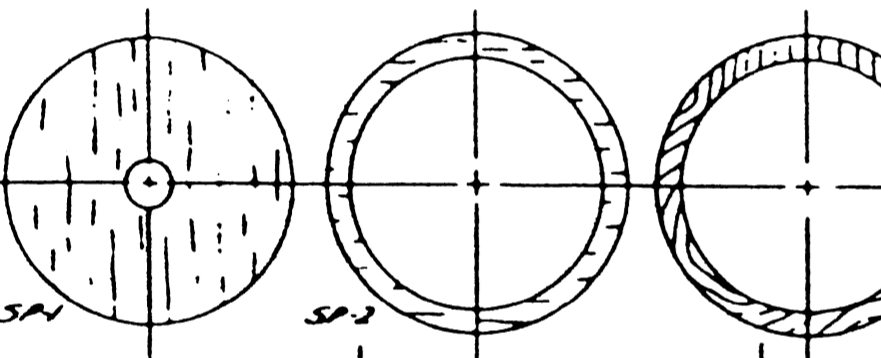
U.S. ARMY - BLACK LETTERS ON UNDERSIDE OF WINGS AS SHOWN.



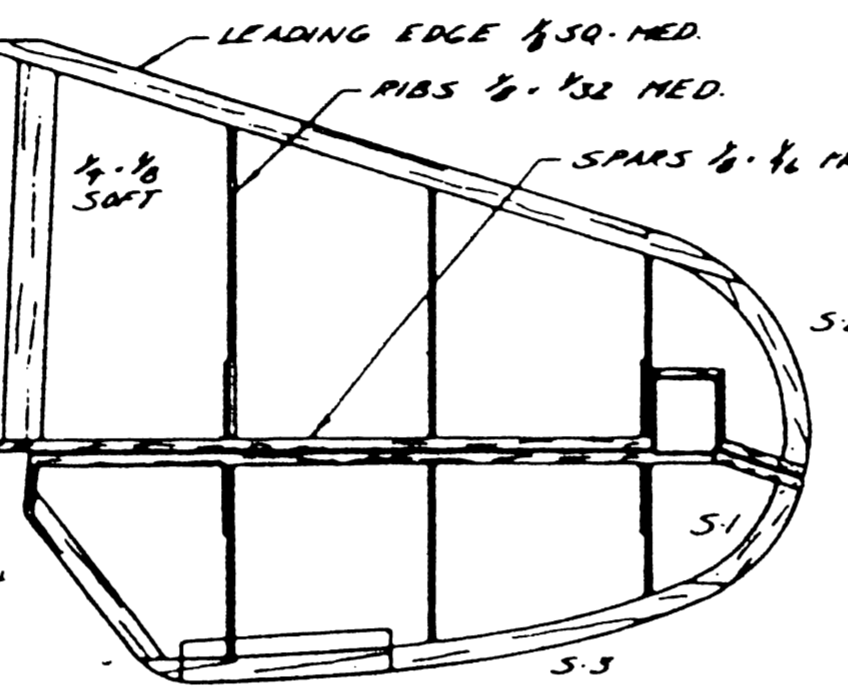
WING - PLAN VIEW



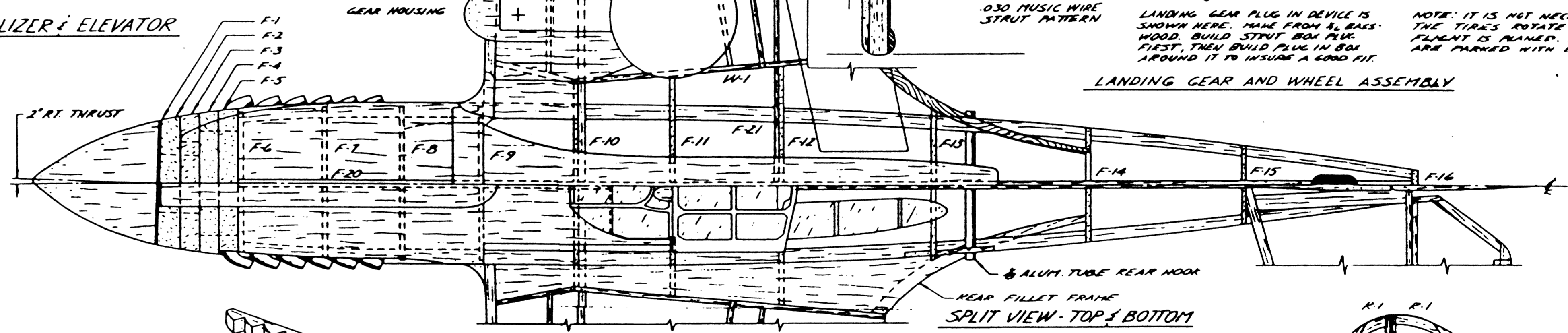
TURN SPINNER FROM MED Balsa BLOCK



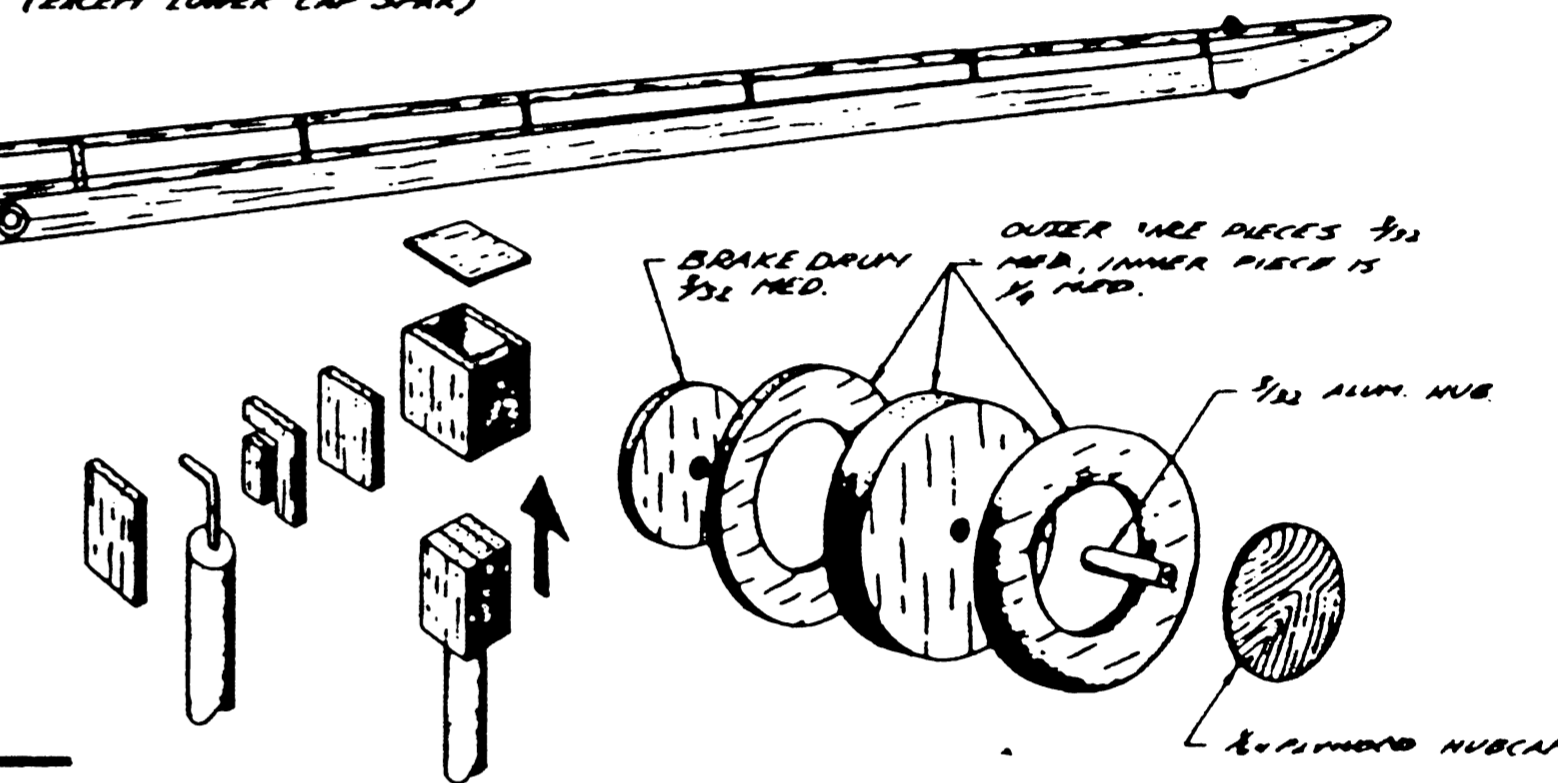
HORIZONTAL STABILIZER & ELEVATOR



P-40E COLOR: OFF THE PRODUCTION LINE AT BUFFALO N.Y. MOST PARTS WERE BONE DRAW LETTERS WITH LIGHT GRAY UNDER COAT. MANY OTHER SCHEMES WERE USED. ONLY SALT REFERENCES SOURCES. THIS MODEL (P-40E) WAS USED BY THE AIR.



FUSELAGE - SIDE VIEW



LANDING GEAR AND WHEEL ASSEMBLY

NOTES ON FUSELAGE ASSY. F-2 THRU F-5 ARE 1/4 SOFT. F-5 THRU F-16 ARE 1/4 MED. NOTE: IN 30 ON F-10 SETS BIVERTICAL ANGLE CUT STRINGER. NOTCHES AFTER BUILD HEAD ASSY. MAKE F-17-18-19-20 FROM VERY HARD 1/4. F-21 IS VERY HARD 1/4. THIS HELPS PREVENT "BANGING" EFFECT. SUGGESTED STRINGER NOTCHES ON F-13

NON-SPINNING SCALE PROP IS PLUGGED INTO NOSE PLUG RECESS. BLADE HUB IS 1/8 PLY. BLADES ARE FROM 1/4 BASSWOOD BLADE PATTERN AT LEFT.

PLANK FORWARD FUSELAGE WITH MED 1/4 Balsa.

MODEL SPECIFICATIONS:

WING SPAN	23.33 IN.
WING AREA	15.00
WING INCIDENCE	15°
DIMEDRAL	7°
DOWN THRUST	2°
AT SIDE THRUST	2°
NOSE STRUT INC.	1°
POWER: 4 STRINGS	1/4 17 WOOD
FINISHING	WT. LT TO 75g

BELL MODEL AIRCRAFT Co.  
650 PINE CREST DR., LAROLD PA 16840  
TEL. 813-584-0003  
AMA 17465

CURTISS WRIGHT CORP. BUFFALO, N.Y. USA  
P-40E KITTYHAWK 23 1/4 IN.  
A 1/4" = 1" 0" FLYING SCALE MODEL  
DWG NO BMA004