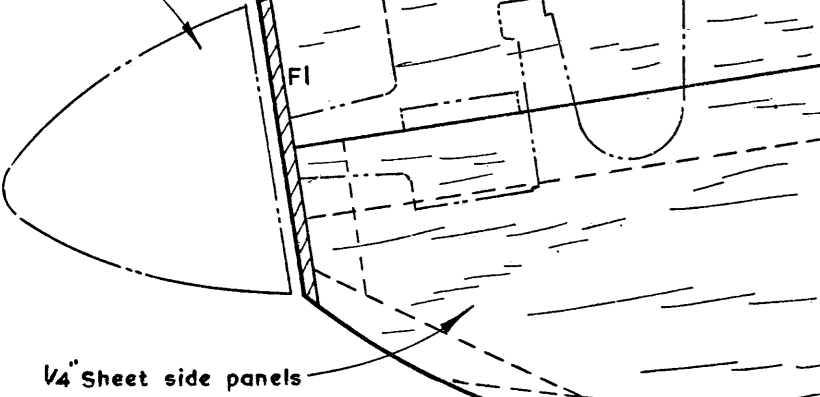
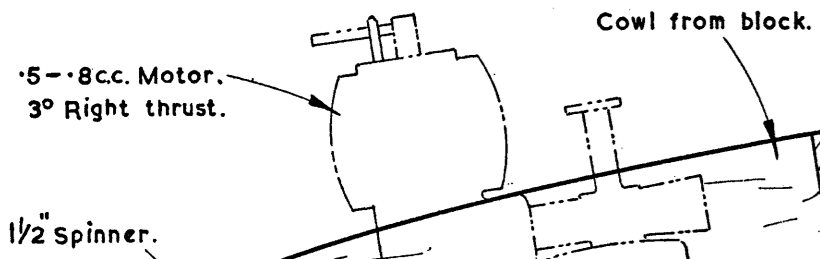


# Chatterbox 3!

A 30" MODEL  
FOR SPORT OR RADIO  
BY VIC. SMEED



**MATERIALS REQUIRED**

5 Strips of 3/16" x 3/16" x 36" H/Balsa	18" of 3/16" Dowel.
1 " " 1/4" x 3/4" x 36" "	9 1/2" x 1 1/4" x 16 S.W.G. Dural.
1 " " 3/8" x 3/8" x 36" "	36" of 14 S.W.G. wire.
2 " " 1/8" x 1/4" x 36" Spruce.	12" " 18 " "
3 Sheets " 1/32" x 3" x 36" Balsa	6" " 20 " "
1 " " 1/16" x 3" x 36" "	3" x 7" of 1/16" Plywood.
1 " " 3/16" x 4" x 36" "	12" of 1/4" x 3/8" Hardwood.
Scrap 1/8" Sheet	Soft block 3" x 1" x 2 5/8"
" 1/4" "	2 Small bushes.

