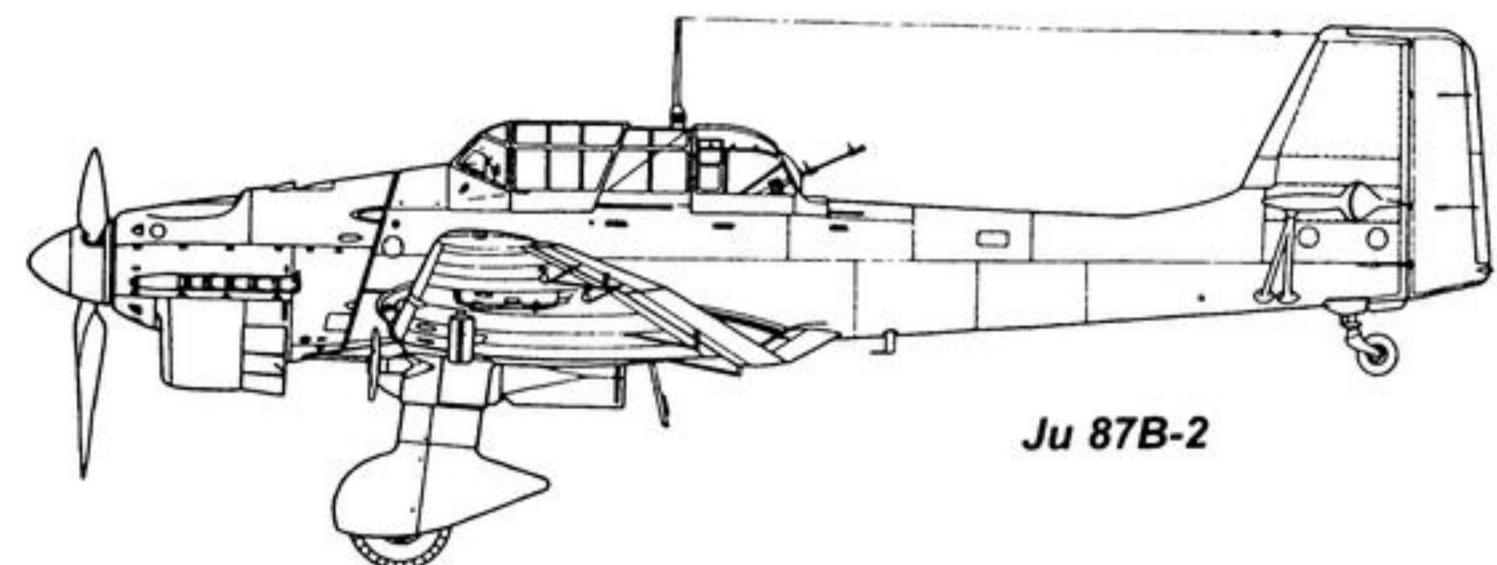


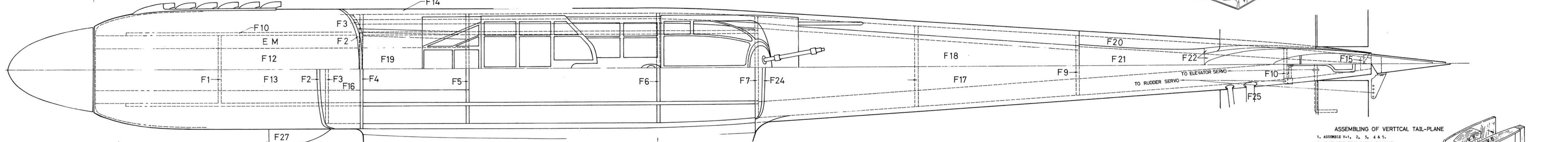
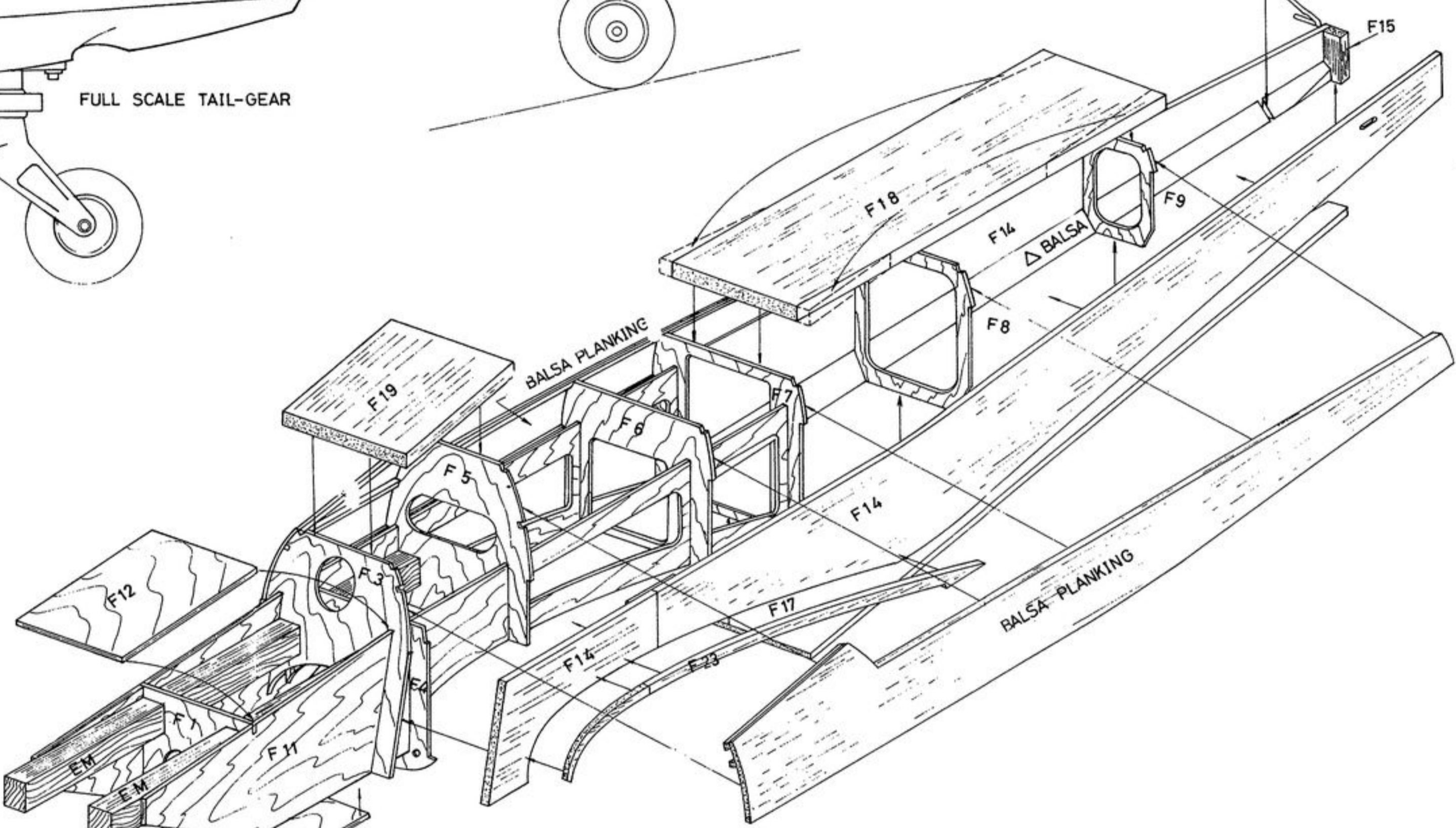
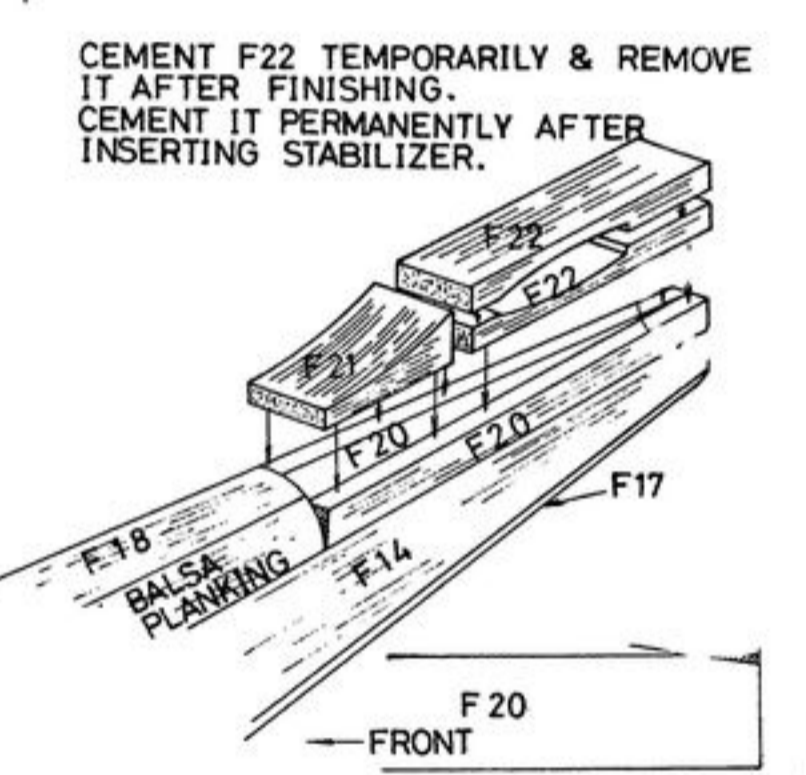
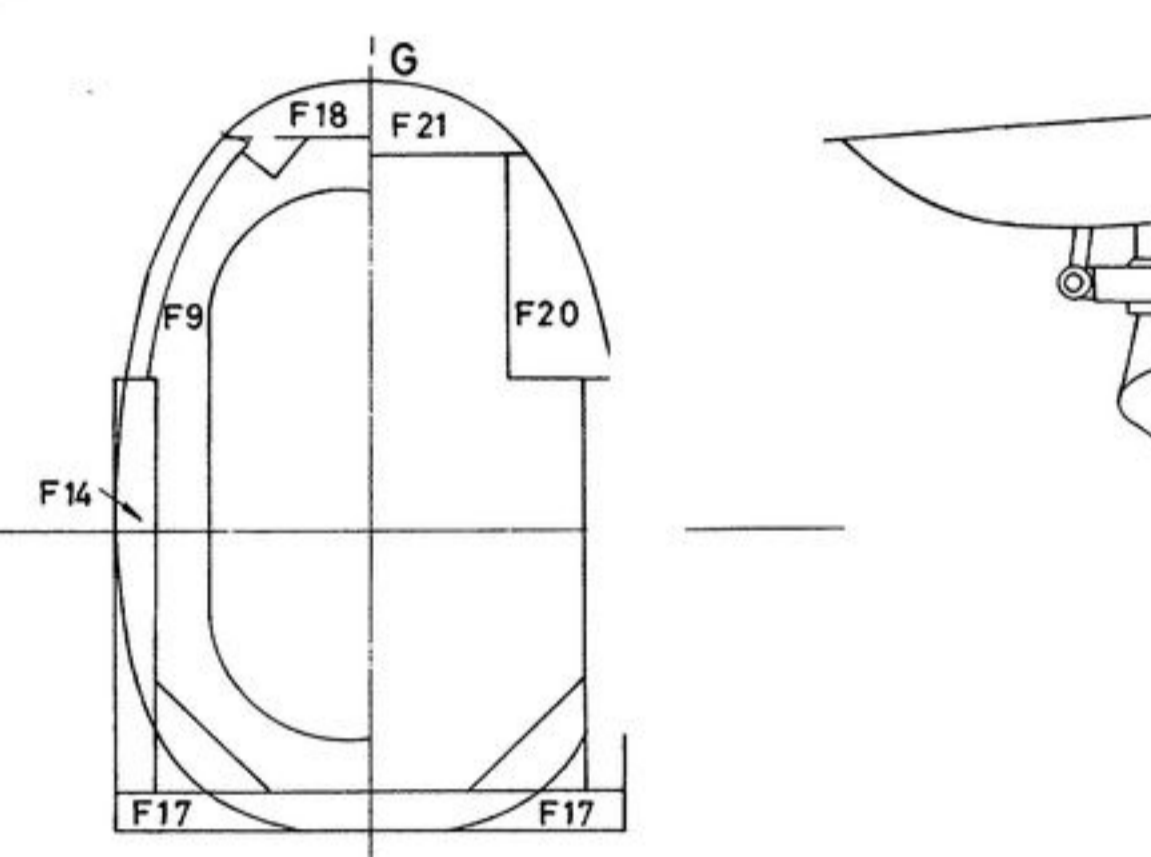
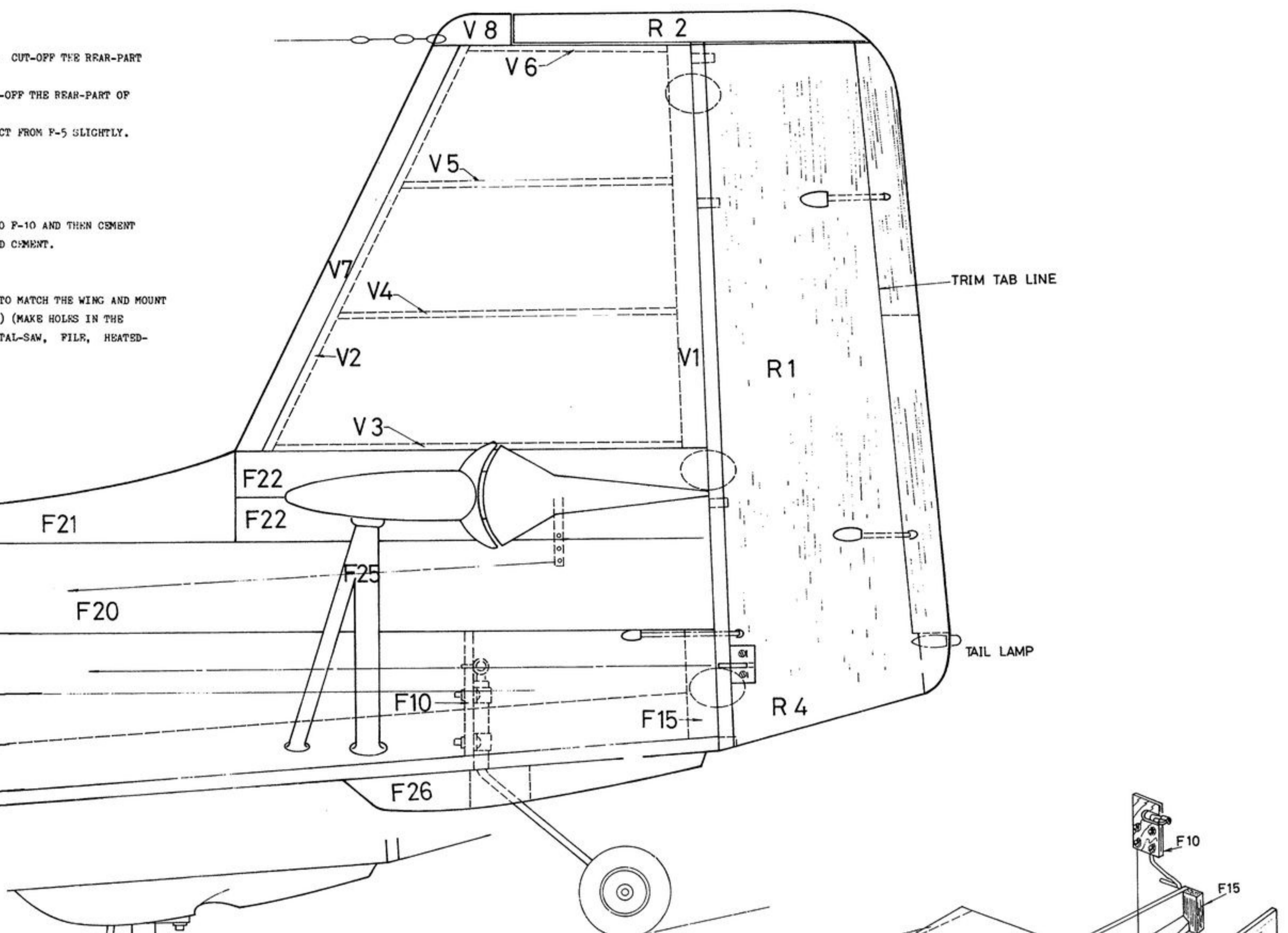
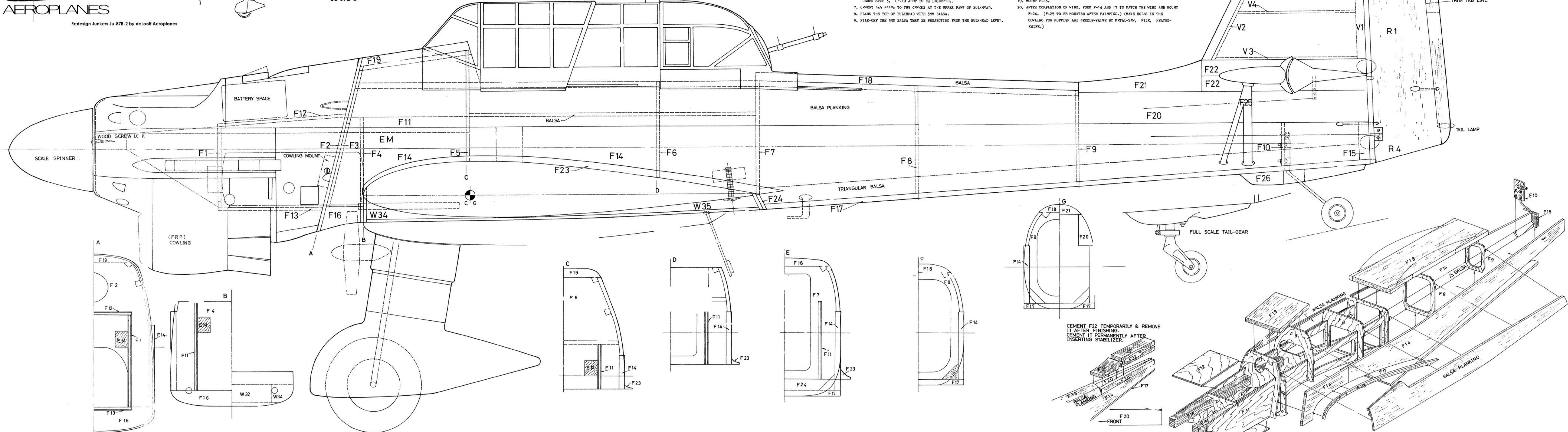
JUNKERS JU87B-2 Sheet 1 of 3



SPECIFICATION			
フルスケール	SCALE	1:83	1/2-1
全長	LENGTH	1365mm	53 3/4"
全幅	WING SPAN	1663mm	65 1/2"
主翼面積	WING AREA	4.5dm ²	697.5sq.in
全機重量	WEIGHT	3.2~3.7kg	7~8LB.
エンジン	ENGINE	60	
無線機	RADIO	4~5ch	4~5ch

ASSEMBLY OF FUSELAGE

- PRE-FABRICATE THE WINGS OF ENGINE MOUNT MATERIAL E.M. TO MATCH THE SKIN TO BE USED.
- CORRECT E.M., P-1 & P-3 THROUGH 7 BY SPOT GLUE TO THE CORRESPONDING LOCATIONS IN P-11. (CAUTION MUST BE PAID TO THE CORRECT ANGLE OF P-3.)
- CORRECT P-12 & P-15 SO THAT THE E.M. AND BULKHEAD ARE IN THE RIGHT ANGLE. (BE CAREFUL NOT TO LET THE PULP/PARK TOUCH E.M., AND IF IT TOUCHES, FILE-OFF THE E.M.)
- JOIN THE FRONT AND REAR PART OF P-14 WITH 50% Balsa SO THAT THE TOP IS STRAIGHT.
- CORRECT 15x15 TRIANGULAR Balsa TO P-14. (CUT-OFF THE P-10 POSITION.)
- MOVE P-15, 8 & 9 TO P-14 AND ASSEMBLE WITH THE FRONT BULKHEAD READY TO STOP 1. (1"=10 J"=10 TO BE INSERTED.)
- CORRECT 145 Balsa TO THE CHINESE OF THE UPPER PART OF BULKHEAD.
- PLANK THE TOP OF BULKHEAD WITH 50% Balsa.
- FILE-OFF THE 50% Balsa THAT IS PROJECTING FROM THE BULKHEAD LEVEL.
- CORRECT P-18 TO THE TOP OF P-4, 7, 8 & 9. CUT-OFF THE REAR-PART OF P-14 AND ADD TO THE FRONT-PART.
- CORRECT P-17 OVER P-7, 8, 9, 10 & 11. CUT-OFF THE REAR-PART OF P-17 AND JOIN TO THE FRONT-PART.
- CORRECT P-19 TO P-1 AND P-5. IT SHOULD PROJECT FROM P-5 SLIGHTLY.
- MOVE P-20, 21 & 22 TEMPORARILY.
- CORRECT FILLER P-23.
- CORRECT P-2 TO MATCH P-5 AND COWLING.
- SAND OVERALL FUSELAGE.
- REMOVE P-20, 21 & 22 AND MOUNT TAIL-GEAR TO P-10 AND THEN CORRECT TO P-14. INSERT THE STABILIZER TO P-20 AND CORRECT.
- CORRECT COWLING-MATERIALS TO P-2.
- MOVE P-26.
- AFTER COMPLETION OF WING, MOVE P-14 AND IT TO MATCH THE WING AND MOUNT P-24. (P-25 TO BE MOUNTED AFTER PAINTING.) (MAKE HOLES IN THE COWLING FOR MUFFLER AND NEEDLE-VALVE BY METAL-DRILL, FILE, HEATED-KNIFE.)



ASSEMBLY OF VERTICAL TAIL-PLANE

- ASSEMBLE V-1, 2, 3, 4 & 5.
- PLANK BOTH SIDES WITH 1.5MM Balsa.
- CORRECT V-7 & V-8.
- SAND THE OVERALL VERTICAL TAIL-PLANE.

